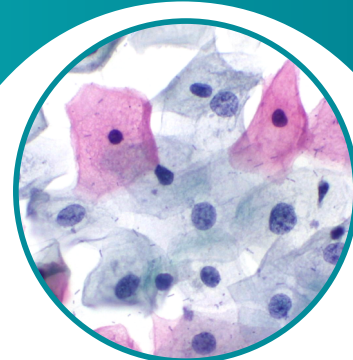
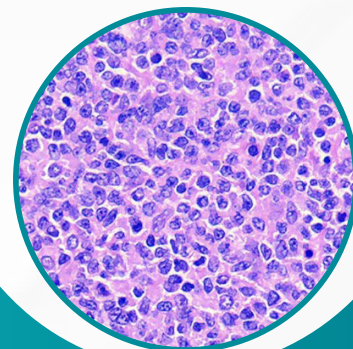




ChromePath

Automated H&E and PAP Stainer



Easy to use LCD
touch screen
panel for easy
operation

Capable of processing
upto 150 slides in a
continuous mode
operation

Offers a
comprehensive
range of functions
from baking to
dehydration

FEATURES

Customizable
protocols to suit
your specific
laboratory needs

Removable jars for
convenient solution
exchange and easy
cleaning

In-built alarm
system for process
completion and
error notification

DESCRIPTION

ChromePath is an Automated Solution that not only enhances convenience but also establishes new standards for your laboratory requirements. With its compact design, it offers both efficiency and precision, making it an ideal high-throughput routine H&E and PAP Staining. ChromePath standardizes the entire process of staining multiple slides simultaneously, setting a new benchmark in workflow productivity.

Enjoy flexibility with 26 stations, among which 17 are reagent stations, ensuring effortless slide rack loading and accommodating a variety of staining protocols. The user-friendly, intuitive software provides enhanced control, significantly reducing the potential for human errors and ensuring a smooth, error-free operation.

TECHNICAL SPECIFICATION

| | | |
|------------------------------------|-----------------------------------|----------------------|
| Voltage: 220v | Frequency: 50-60Hz | Power: 300V/A |
| Capacity of Each Slide Rack | 30 Slides | |
| Number of Stations | 26 | |
| Number of Reagent | 17 | |
| Jar Capacity | 500ml | |
| Washing Stations | 3 | |
| Waiting Stations | 3 | |
| Baking Station | 1 | |
| Baking Temperature | 35-99°C | |
| Continuous Slide Loading | Yes | |
| Program Capacity | Supports 5 Programs in single run | |
| Dimension | 120(L)x50(W)x60(H)cm | |
| Weight | 110kg | |

ORDERING INFORMATION

| | |
|-----------------------|-------------------|
| Equipment Name | Catalog No |
| ChromePath | PS-CP5 |

Contact Us

- 📍 **USA** : 7026 Koll Center Parkway, STE#211, Pleasanton, CA 94566, USA. ☎ +1 925-218-6939
- 📍 **Canada** : 30 Bertrand Ave, Unit B209, Scarborough, Ontario - Zip - M1L 2P5, Canada. ☎ +1 437-269-3912
- 📍 **India** : PS Heights, Road#15 Nacharam IDA, Hyderabad-500 076, Telangana. ☎ 040-2701-5533 /5544
- ✉ info@pathnsitu.com | customerservice@pathnsitu.com
- 🌐 www.pathnsitu.com

