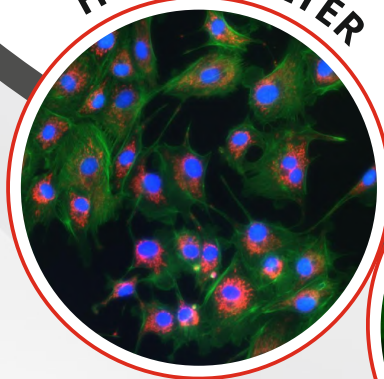


**UNLEASH THE POWER OF NEXT-GENERATION
SCANNING WITH OUR PREMIUM FLUORESCENT APPLICATIONS**

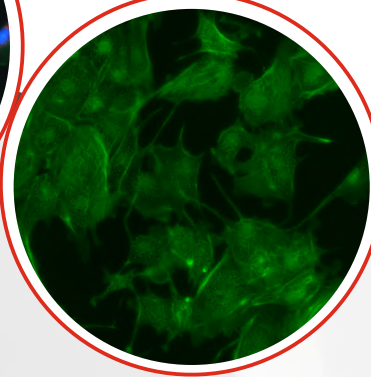
SCANNERS WITH FLUORESCENCE APPLICATIONS | RANGES OF MICROSCOPES | MOTICAM



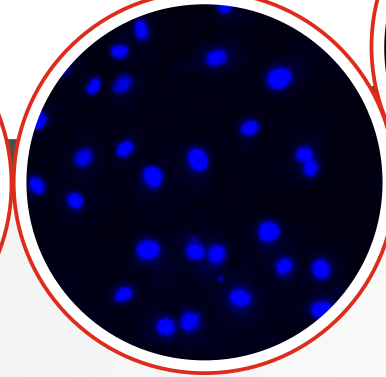
HYBRID FILTER



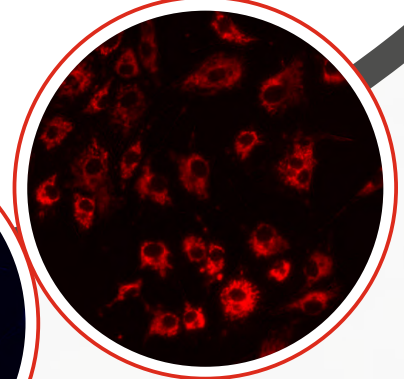
FITC



DAPI



TRITC



FOR DETAILS SCAN



WHO WE ARE ?

Motic - Founded in 1988, specializes in conventional microscopy and expanded its reach globally. Motic has evolved into digital microscopy, strengthening its industry presence and backed by a robust dealer network ensuring product excellence and support. Motic's core value is **"Meeting customer's requirements today but also their expectations of tomorrow"**, remains unchanged to this day.

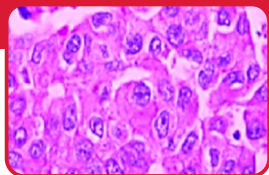
PathnSitu Biotechnologies - Excels in high-quality tissue-based cancer diagnostics. With over 20 years of experienced team of the world class scientific and technical advisors has given comprehensive solutions for developing end to end tissue pathology products which includes histology equipment, innovative clones and antibodies to advance diagnostics and healthcare.

While moving towards our goals, PathnSitu is excited to work alongside Motic since 2020. This partnership **combines PathnSitu's diagnostic excellence with Motic's advanced optical technology**, enhancing research capabilities and diagnostic accuracy. Together, we aim to push the boundaries of healthcare innovation and deliver one-stop solution to the global medical community providing the one stop solution by adding cutting-edge microscopy advancements to our customers.

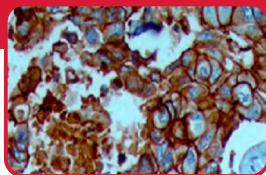


MOTIC SCANNERS

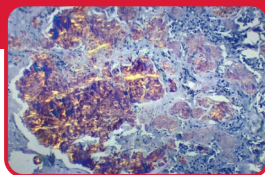
The MoticEasyScan system simplifies glass slide digitization with options for 1-slide to 300-slides. Its portable design and high-definition imaging ensure superior clarity with a single click and ease of use. Ideal for cytology, histology, and cytopathology, its user-friendly software facilitates quick and reliable data acquisition, digital archiving, seamless slide sharing, and live remote observation, offering real-time global access to your slides.



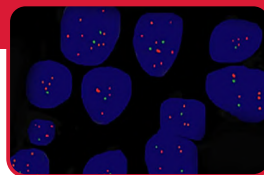
H&E



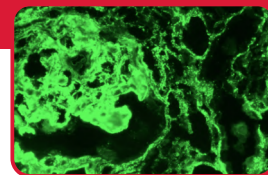
IHC



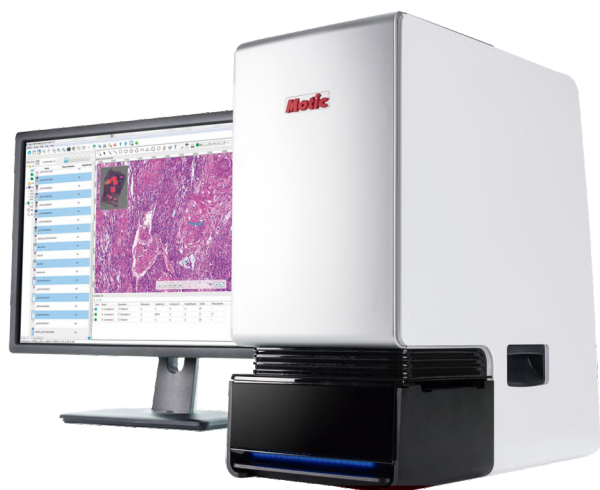
CONGO-RED



FISH

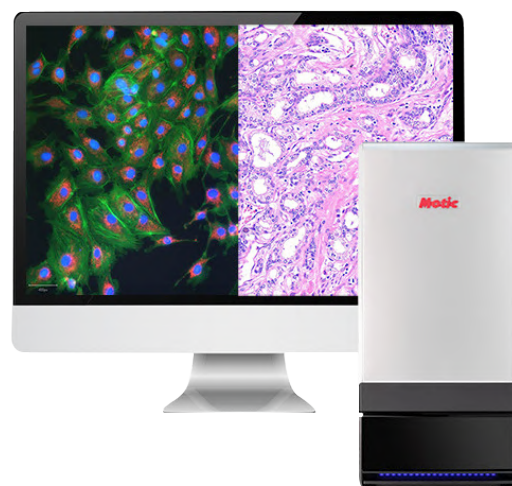


FITC



MOTIC EASY SCAN ONE

Compact and Powerful:
The Premier Desktop
Scanner for One-Slide Viewing.



MOTIC EASY SCAN FL

Experience the vivid clarity
of fluorescent Slides.



MOTIC EASY SCAN PRO

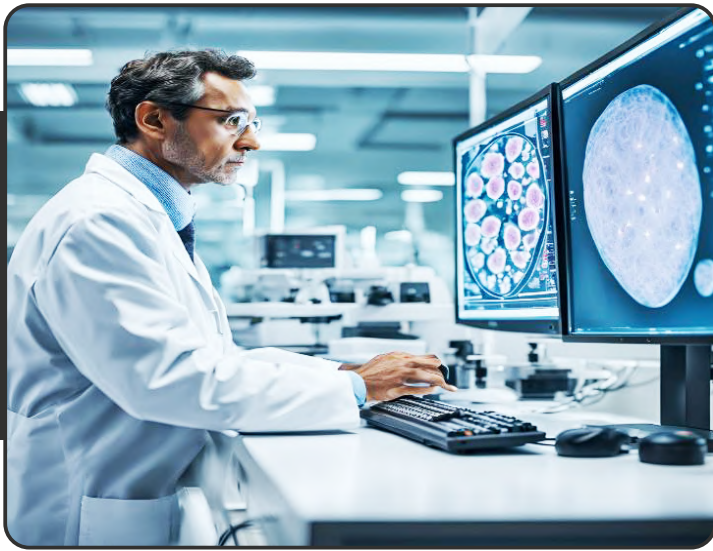
High-resolution,
versatile scanner that digitizes up to
6 glass Slides with a single click.



MOTIC EASY SCAN INFINITY

Elevate your scanning efficiency with:
Rapid, high-quality image with
On-Fly Slide integration.

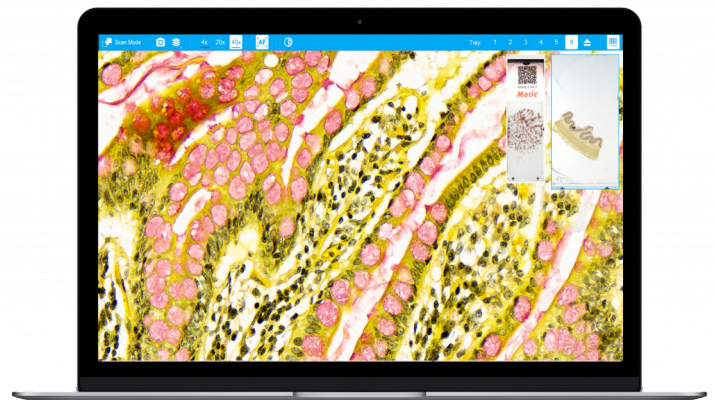
FROZEN SECTION - LIVE REMOTE USING A MOTIC SCANNER



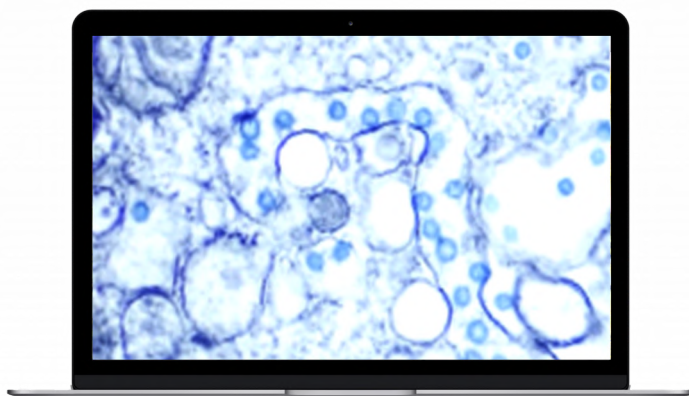
REVIEW SLIDES LIVE FROM ANYWHERE

A ground-breaking system built for rapid onsite assessment of frozen sections, FNAs, and other cytology adequacy checks.

- **View and control live** : Take full control and operate the scanner like a robotic microscope.
- **Intuitive and easy to use** : Designed for live slide review and seamless pathologist-technician communication.
- **Save time and money** : Check slides from remote sites or the home office, eliminating cross-campus travel and shipping of glass slides.



BEST-IN-CLASS CONTINUOUS AUTOFOCUS



A superior autofocus mechanism that keeps the image in focus instantly, saving you time and effort.

- Dedicated focus camera
- Instantly adjusts for uneven thickness
- Quickly move while in focus

RANGE OF MICROSCOPES

PANTHERA SERIES -CONSULTANT GRADE

Discover the Panthera Compound Microscope Series, where sleek design meets cutting-edge technology. Featuring Plan UC objectives and UC Widefield eyepieces for exceptional clarity and contrast, it also boasts an advanced **light management system with automated controls**. Ideal for both education and research, the Panthera Series combines precision, innovation, and ease of use to enhance your visual experience.



Panthera S



Panthera E



Panthera U



Panthera C2

MOTICNET MICROSCOPE

Transform your classroom with Moticnet - a progressive network system that connects students and teachers with microscopes using integrated Wi-Fi cameras, enhancing the learning experience with dynamic interaction.



Compound **MICROSCOPES**

See the Unseen with Precision

BA210E SERIES

The BA210E microscope is perfect for basic life sciences applications and designed for ease of use and longevity.

- Features high-quality plan achromat objectives.
- The N-WF 10X/20 eyepieces provide a fast sample overview, with a maximum User-friendliness in adjusting the eyepieces to an individual eye sight.
- BA210E attribute a 30W Halogen illumination system in a Fixed Koehler setup.
- A high-quality condenser with NA 1.25 enables the visualization of weakly or non-stained samples.
- The BA210E's hard-coated stage is built for durability, and the slide holder ensures secure, long-term sample evaluation.



BA310E SERIES

BA310E is a professional transmitted light microscope, designed for intense use in universities, clinics and laboratories.



- The BA310E optics is based on CCIS© EC Plan Achromatic objectives for transparent samples like sections, smears and dispersions.
- The BA310E's hard-coated stage is built for long-term daily use, and its 2-slide holder ensures secure, extended sample evaluation.
- Köhler illumination quartz halogen 6V/30W with intensity control.
- Safe, compact and environmental-friendly.
- Interchangeable HAL/LED lighting and reversed quintuple revolving nosepiece.
- Customizable with various filter cubes and advanced FISH/HER2 modules as needed.

MICROSCOPE WITH ADVANCED FLUORESCENCE APPLICATIONS

BA410E SERIES

The BA410E Microscopes offers top-notch apochromatic performance with Motic's CCIS infinity system and optional bright field objectives.



- Featuring the LUMOS High-power LED FL light source.
- It supports multi-colour staining (Filter cubes DAPI, FITC, TRITC, and mixed filters).
- Reversed coded sextuple nosepiece.
- Allows upgrades to Fluorite and Apochromatic lenses.
- Köhler illumination quartz halogen 12V/50W or 12V/100W.
- Ideal for diverse research needs & also supports the liquid and solid tumors of FISH application.
- Can upgrade to Penta headed microscope.

PA53 BIO SERIES

- The PA53 BIO series excels in fluorescence with its high-power LUMOS LED light source and filters for multi-colour staining.
- It boasts CCIS® HPlan S-APO objectives, an auto EDF stand, and a motorized Z-axis, making it perfect for advanced biomedical research.
- The system supports the liquid and solid tumors of FISH applications and various filter cubes, including DAPI, FITC, and TRITC.
- Bio analysis software for capturing and editing images.



INVERTED MICROSCOPES

Explore Your Research Under Optimal Vision

AE2000 SERIES

- Motic's AE2000 Inverted Microscope is designed for daily live cell inspection, providing excellent image quality for cell cultures and tissue samples in universities, clinics, and labs.
- offering high-quality images with LWD Plan Achromatic objectives and Phase contrast.
- Has side facing quadruple, nosepiece Coaxial coarse and fine focusing system.
- The fixed stage plate features a glass insert for quick objective checks, while the 4-fold substage nosepiece and 2 μ fine focus allow smooth adjustments for cell cultures and water samples.



AE31E SERIES

- The AE31E Series delivers advanced inverted microscopy with high-quality imaging and ergonomic design.
- Perfect for clinical, pharmaceutical, and research settings, it features LUMOS LED fluorescence, multi-colour staining, and customizable filter cubes (DAPI, FITC, TRITC).
- The models offer 'Light Memory' and Auto ON/OFF functions for efficient workflows and can be upgraded for enhanced fluorescence capabilities.
- Bio analysis software for capturing and editing images.



STEREO MICROSCOPES

3D Viewing With Dual Optical Paths

A stereomicroscope uses two separate light paths to direct light to each eye. This independent light travel from a single point on the specimen creates a three-dimensional appearance.



SMZ161 SERIES

- The Motic SMZ-161 stereomicroscope uses a Greenough optical system for clear distortion-free images with a 6:1 zoom ratio and 110mm working distance.
- It offers up to 180X magnification with various lighting and accessory options.
- Designed for comfort with a 45° viewing angle and 367mm eye point.
- It supports extended use and adapts to different workflows with optional stan.

SMZ171 SERIES

- Versatile stereo microscopes ideal for advanced research in biomedicine and material science.
- The Greenough optical system offers 3D imaging with a 6.7:1 zoom, magnification from 7.5X to 50X, and a 110mm working distance.
- Includes click-stops for precise magnification and a photo port for digital camera integration and software-based.



MOTICAM

CAMERAS FOR ANY MICROSCOPE

Explore Motic's digital microscopy with Wi-Fi, HDMI, USB3, and SD card connectivity. Moticam cameras, with easy eyepiece or C-mount attachment, work with Windows, Mac, and Linux. The Moticonnect App lets you stream, capture, and share images from your mobile device.

MOTICAM **S1 & S3**

The Moticam S1 & S3, with its new back-illuminated sensor and fast data transfer (up to 120 fps), makes capturing images simple. Convert and share or print your photos like a pro.



MOTICAM **ProS5 Lite & ProS5 Plus**

The Moticam Pro S5 Plus has a 2/3" sensor with 5MP resolution and up to 70 fps, while the Pro S5 Lite features the same sensor with 5MP and up to 40 fps. Both excel in detail, speed, and large area imaging.



MOTICAM **S6 & S12**

The Moticam S6's 6MP resolution is perfect for large displays and printing. For top resolution and handling large data volumes, the Moticam S12 is ideal, offering 25fps for high-resolution needs.



MOTICAM

CAMERAS FOR ANY MICROSCOPE



MOTICAM X & X3

Introducing the Moticam X, a cutting-edge microscope camera that upgrades traditional microscopes into wireless devices. It streams high-resolution images to up to 6 WiFi-enabled devices like tablets, smartphones, or computers—without needing a router, as it creates its own WiFi signal.

Compatible with iOS, Android, OSX, and Windows, the Moticam X features a 1.3MP CMOS sensor, a 12mm focusable lens, and includes digital C-mount attachments, eyepiece adaptors, a microtube, and a calibration slide. It works with Android (ICS and above), iOS (OS5 and above), and universal HTML5 browsers.



MOTICAM 1080 BMH

Moticam 1080N BMH: Full HD imaging and on-screen controls, seamlessly integrated with HDMI and USB.



Moticam 1080



Moticam 1080BMH



Moticam 1080INT

BTX8 & BTU10

The Moticam BTI combines a 4MP Wi-Fi camera with a 10" Android tablet for live imaging at 30 fps on any vertical photo tube microscope. Its Wi-Fi connectivity and MotiConnect App make capturing, editing, and sharing images effortless.





CONTACT US

- 📍 **USA :** 7026 Koll Center Parkway, STE#211, Pleasanton, CA 94566, USA. **Ph:** +1 925-218-6939
- 📍 **Canada :** 30 Bertrand Ave, Unit B209, Scarborough , Ontario - Zip - M1L 2P5, Canada. **Ph:** +1 437-269-3912
- 📍 **India :** PS Heights, Road#15 Nacharam IDA, Hyderabad-500 076, Telangana. **Ph:** 040-2701-5533 /5544
- ✉ info@pathnsitu.com | customerservice@pathnsitu.com
- 🌐 www.pathnsitu.com