

MULTI EPITOPE RETRIEVAL SYSTEM

For Laboratory Use



MERS 

FOR DETAILS SCAN



Pressure Based Walkway System



On Demand Pressure Cycles



One Touch Fully
Digital Programs



Auto Resume For
Short Time Power Cuts



Temperature
Display



MERS 

Audio Visual
Alarms



Set Desired
Temperatures



Multiple Protocols
in a Single Run




24 Hours Delayed Start



High Throughput Up To 72
Slides in a Single Run



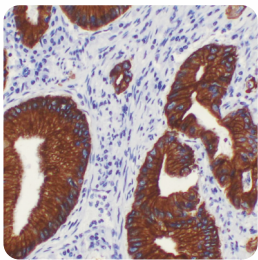
DESCRIPTION

Multi Epitope Retrieval System is designed to perform optimal antigen retrieval triggered by heat under pressure. The customized one touch retrieval programs are validated in house for Immunohistochemistry (IHC). User safety is our top priority and MERS  is designed with double protection technology to ensure safe release of excess pressure. The built-in fully digital default programs in the system makes it a revolutionary walkaway system with unique features like different protocol selection with different pressure conditions, Delayed Start, Digital timer Count down, Temperature display, Set temperatures and Auto resume for short time power cuts. The optimal temperature and pressure speeds up the process and yields to consistent staining.

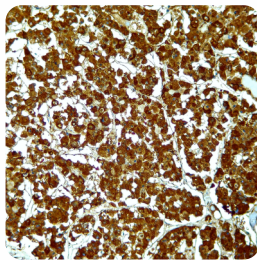
SPECIFICATIONS	
Cat. No.	: MERS i
Voltage	: 220-230V AC, 50-60Hz
Power	: 900W
Size (approx. in inches)	: 16(L)X8.5(W)X5.5(H)
Gross Weight (approx)	: 6 Kg

ORDERING INFORMATION	
Description	Catalog
MERS	: MERS i
Staining Jars	: SJ001
Slide Rack	: SR001
Stand	: ST001

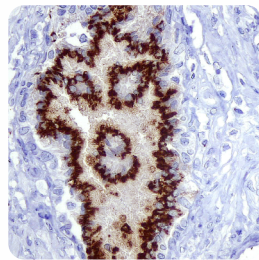
AUXILIARY PRODUCTS	
Description	Catalog
Citrate Buffer	: PS007
EDTA Buffer	: PS008
Tris - EDTA Buffer	: PS009



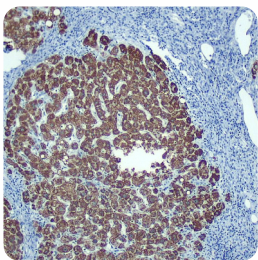
Colon Ca stained with CKAE1/AE3



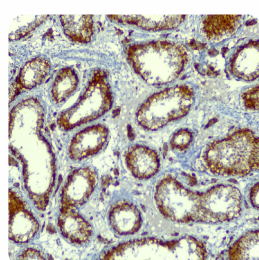
Pituitary stained with ACTH



Benign Prostate Hyperplasia stained with Prostein



Liver stained with Hep Par-1



Testis stained with Inhibin



MERS 

Contact Us

- 📍 **USA** : 7026 Koll Center Parkway, STE#211, Pleasanton, CA 94566, USA. 📞 +1 925-218-6939
- 📍 **Canada** : 30 Bertrand Ave, Unit B209, Scarborough , Ontario - Zip - M1L 2P5, Canada. 📞 +1 437-269-3912
- 📍 **India** : PS Heights, Road#15 Nacharam IDA, Hyderabad-500 076, Telangana. 📞 040-2701-5533 /5544
- ✉ info@pathnsitu.com | customerservice@pathnsitu.com
- 🌐 www.pathnsitu.com