

FOR DETAILS SCAN



 **PathnSitu**
Biotechnologies
Your Advanced Tissue Pathology Partner

Motic[®]

MORE THAN MICROSCOPY



WHO ARE WE?

Value, innovation and friendliness. Those are the key traits Motic has tirelessly worked to embody since it was founded in 1988. It is through our passion for providing value, our boundless creativity, and our unwavering dedication to the customer, that Motic has spent the last 30+ years becoming a leading manufacturer of microscopy tools with over 2000 employees and offices all over the world.

PathnSitu Biotechnologies is a leading company in the supply of high-quality products for tissue-based Cancer Diagnosis. PathnSitu team consists of world class scientific advisors and hands-on technical advisors that bring over two decades of global tissue diagnostics experience directly to the customer. PathnSitu is dedicated towards customer satisfaction through timely delivery of its products with an extraordinary service.

Employees at PathnSitu are aligned towards a common goal of betterment of human life and thus, ensures holistic care for its employees to provide conducive environment for their performance. While moving towards our goal, We are delighted to announce partnership of PathnSitu with MOTIC for its synergy of wide range of microscopes for advanced schools, university usage, clinical setups, Pharma industries, Pathology labs, Medical Colleges, Veterinary Colleges providing a one stop solution to our customers.

RANGE OF MICROSCOPES

Scanners

Digitization of "classical" glass slide information is an essential approach for more reliable, fast and efficient work in medical environments of cytology, histology and cytopathology at competitive prices. Motic Easy Scan is an efficient instrument for producing and sharing high-quality images from different sources. Simple and easy, the implemented software also allows inexperienced users a quick and reliable data acquisition. A series of scanners for the digitization of glass slide information. Digitally save samples from the patient, share your slides or switch to live mode for a direct remote observation anywhere in the world through internet access.



MOTIC EASY SCAN ONE

The best desktop slide scanner available today. Compact, powerful and deployable anywhere



MOTIC EASY SCAN PRO

The perfect product for any medical organization looking to join the digital revolution in pathology



MOTIC EASY SCAN INFINITY

Fully-featured solution for any organization in need of reliable, high volume scanning

Panthera Series

Created with user-friendliness and convenience in mind, the Panthera Series utilizes leading edge technology to deliver precise and detailed images, while also making the user experience easier and more efficient. Each model of microscope in the Panthera Series has been designed for a different usage situation, from educational applications to professional laboratory research and analysis.



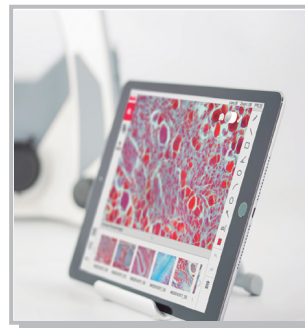
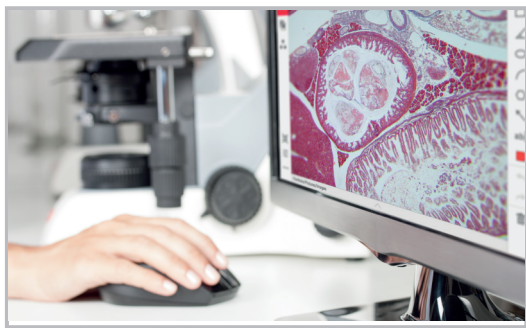
Panthera S



Panthera U



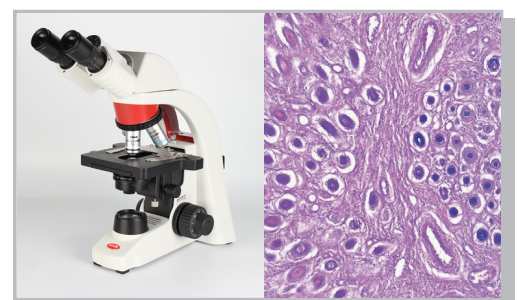
Panthera C



BA Series-Basic Biological Microscope

BA 210 E Series:

The BA210 is designed for both educational and teaching environments from basic life sciences to medical applications. Motic BA210RED is a robust student instrument that brings professional, repeatable image quality results to all of its intended applications.



BA 310 E Series

The BA310 is designed for the rigors of daily routine work in the demanding applications of Universities, Clinics, Laboratories and many other life science or medical applications requiring quality optical performance.



BA 410 E Series

Within the BA410E, Motic's CCIS© Infinity concept presents this apochromatic level of performance in a complete set of optional bright field objectives, compatible to all BA series models of upright microscopes. Highest quality demands from pathology, microbiology, hematology and histology can now be satisfied for a reliable diagnosis in routine and research work of hospitals and other biomedical labs.



Inverted Microscopes

AE2000 Series

Designed for routine-lab or clinical work, as well as research requirements in Pharmaceutical Laboratories or Universities, the AE2000 is more than capable of fulfilling the expectations of its users.



AE31 Series

The AE31 Elite is Motic's new statement for a professional inverted microscope providing best image quality, ergonomic design and clever illumination features. The AE31 E is the perfect platform for all kind of routine microbiology applications in clinical and pharmaceutical laboratories with best options for university research environments.



Stereo Microscopes

Stereo microscope from Motic enables you to dissect or view your specimens in three dimensions with precise optical alignment that assures a three-dimensional and upright image that will enhance the clarity and quality of your overall experience. Combining with our Moticom series, it will transform a traditional microscope to a digital microscope, which allows you to present the final result of the specimen in high resolution and view it on a screen.

SMZ161

Employing the Greenough stereoscopic optical system, the Motic SMZ-161 series stereo microscopes provide you large-scale zoom ratio and the clearest image, high distortion-free and depth of field as well. SMZ-161 offers the best performance of a zoom ratio with 1:6, high resolution and long working distance

SMZ171

The SMZ-171's optical performance, combined with its expanded accessory line, make it an ideal instrument for the demanding requirements for both routine and research fields. From biological and medical preparations to industrial quality control and inspection, the SMZ-171 will deliver repeatedly clear and distortion-free images.



Digital Cameras

Motic is one of the first microscope manufacturers who started to develop digital microscopy solutions, digital imaging products and application software. This new development in microscopy has led to a complete range of digital microscopes, digital cameras and software for all types of applications. Our range includes CMOS and CCD cameras with different chip sizes and resolution. All digital microscopes and MotiCam cameras come as an all-in-one-box concept that includes software, calibration slide, eyepiece adapters with the cameras and much more. This microscope add on can produce images in high resolution that can be view on any LCD screens and is an excellent tool for any life science, medical and education field.



MOTICAM

At Motic, we strive to ensure that everything that you may need to attach the MotiCam to your Microscope is included in one box.

MOTICAM S1 & MOTICAM S3 :

The new MotiCam S line starts with the S1 with its 1.2MP sensor with large pixels. This little camera packs a punch with up to 120fps at full resolution or up to 240fps in binning mode. The S3 promises crisp and detailed images thanks to its higher live resolution and fast frame rate even at 2048x1536 pixels.



MOTICAM 6 & MOTICAM 12 :

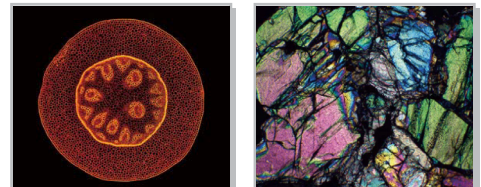
If it is more pixels you are looking for, look no further than the S6 and S12. With 6MP and 12MP live transmission, either one of these two power cameras provide an ideal platform for high-resolution imaging.

MOTICAM ProS5 Lite & MOTICAM ProS5 Plus :

The Pro S5 line is ideal for your fluorescence microscopy needs. Delivering CCD like performance in an sCMOS price-bracket, the Pro S5 line is available in Lite and Plus versions featuring Global Shutter technology as well as large pixels and up to 175fps.

MOTICAM 1080 & 1080 BMH :

As an affordable multi-tasking microscopy camera, the MotiCam 1080 is in a class of its own. This camera does not require a computer for standard operation as the user can make image adjustments and capture straight through the camera's on-board software. Capture up to 8MP images directly onto an SD card or connect an external monitor through the true HDMI output and this MotiCam 1080 allows you to view details as you have not seen before. Should you wish to use a computer at the same time, simply connect the camera through the USB port and enjoy simultaneous image transmission.



BTX8 & BTU10 :

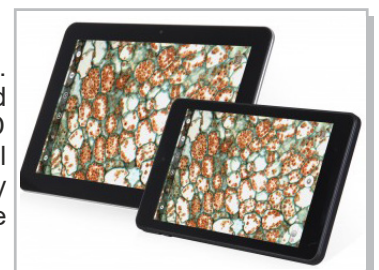
The BTX8 and BTU10 offers the user the opportunity to upgrade a trinocular microscope into a fully independent digital microscopy workstation. These solutions come in two parts. The 8" or 10" android tablet can easily be separated and use on its own. The camera contains a 5MP CMOS chip dedicated for microscopy use and can be directly connected to the provided tablet. Once connected to the high-resolution tablet, the user can view, capture, edit and measure the live microscope image through Motic's free App MotiConnect. Should you wish to connect the BTU to a computer, you can easily do so using the USB adapter. This device allows many people to view the live microscope image at the same time, but also enables easy and immediate sharing of ideas and experiences.

MotiCam X & MotiCam X3 :

Step into the world of Wireless Digital Microscopy with the easy to use MotiCam X which has enjoyed great popularity since its launch. Together with the new MotiCam X3, these solutions are able to transform almost any microscope into a wireless station sending high resolution live images to multiple devices such as computers, tablets or phones.

MOTIC LCD SCREEN

With the emergence of smart phones and tablets, the idea of being mobile is essential. As the forefront company of manufacturing digital microscopy systems, Motic has developed the all new interactive microscopy screen with the MotiCam S. Our new LCD microscope screen opens a new dimension in interactivity for microscope work that will help both teacher and students in the educational setting with traditional microscopy material. Perfect for STEM applications. The screen is an easy to remove or upgrade microscope add on that is based on c-mount standard interface.





CONTACT US

- 📍 **USA** : 7026 Koll Center Parkway, STE#211, Pleasanton, CA 94566, USA.
☎️ +1 925-218-6939
- 📍 **Canada** : 30 Bertrand Ave, Unit B209, Scarborough , Ontario - Zip - M1L 2P5, Canada.
☎️ +1 437-269-3912
- 📍 **India** : PS Heights, Road#15 Nacharam IDA, Hyderabad-500 076, Telangana.
☎️ 040-2701-5533 /5544
✉️ info@pathnsitu.com | customerservice@pathnsitu.com
🌐 www.pathnsitu.com